

THE INFORMATION CONTAINED IN THIS DRAWING IS THE SOLE PROPERTY OF THE RANDOLPH AUSTIN CO.. ANY REPRODUCTION IN PART OR WHOLE WITHOUT THE WRITTEN PERMISSION OF THE RANDOLPH AUSTIN CO. IS PROHIBITED.

D
C
B
A

D

C

B

A

Qty1
51-0020 (B)
Side Plate, Hinged

Qty 1
00-0606
Clevis Pin

Qty 1
01-0187
E Clip

Qty 1
51-0080
Impeller Plate & Shaft

Qty1
01-0132
Snap Ring, Shaft

Qty 2
01-0112
Bearings

Qty: 1
P/N 01-0285
Wave Washer

Qty 2
P/N 51-0140
Impeller Roller Assy

Qty 1
00-0521
Shim

Qty 1
61-0441
Nut, Adjusting

Qty 1
00-0295
Washer

Qty 1
01-0186
E-Clip

Qty 1
51-0010 (B)
Machined Housing

Qty 1
61-0440
Screw, Clamp

Qty 1,
51-0030 (B)
Tube clamp, Hinged

UNLESS OTHERWISE SPECIFIED
DIMENSIONAL TOLERANCES ARE:
FRACTIONS DECIMALS ANGLES
MILLIMETERS:
N/A ±.1 ±1.0°
INCHES:
±1/64 ±.005 ±1.0°

CAD GENERATED DRAWING,
DO NOT MANUALLY UPDATE

Randolph Austin Company
PO 988 2119 FM 1626 MANCHACA TX.

Exploded view
500 pump, hinged side cover

NEXT ASSY	USED ON
APPLICATION	

MATERIAL

FINISH

DO NOT SCALE DRAWING

APPROVALS	DATE
DRAWN	
CHECKED	
RESP ENG	
MFG ENG	
QUAL ENG	

SIZE A	DWG. NO. 500-PHO- XP	REV.
SCALE	CAD FILE:	SHEET OF

8

7

6

5

4

3

2

1

8

7

6

5

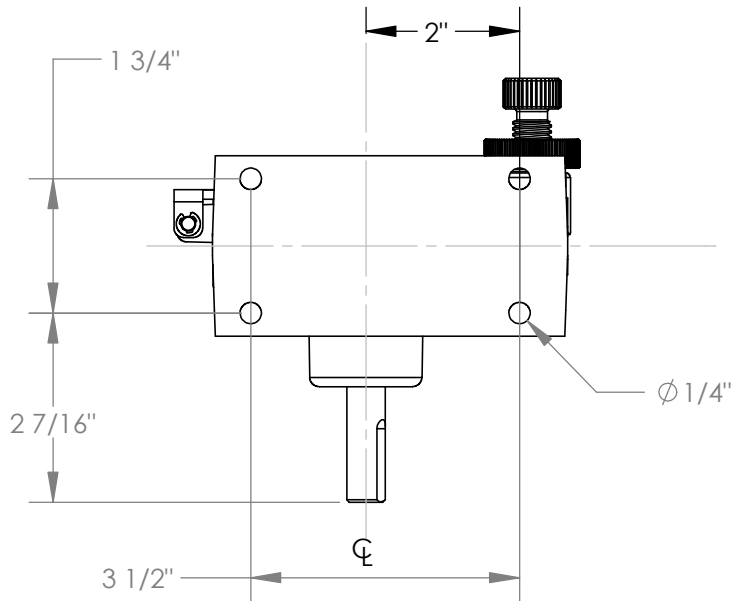
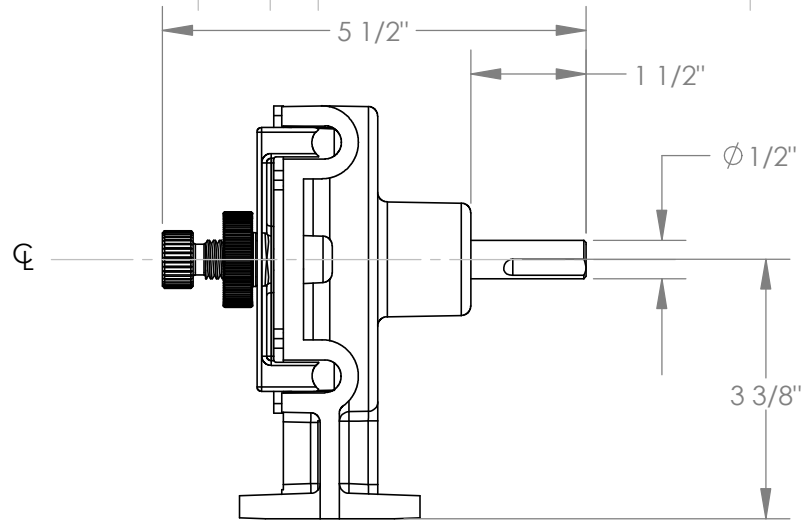
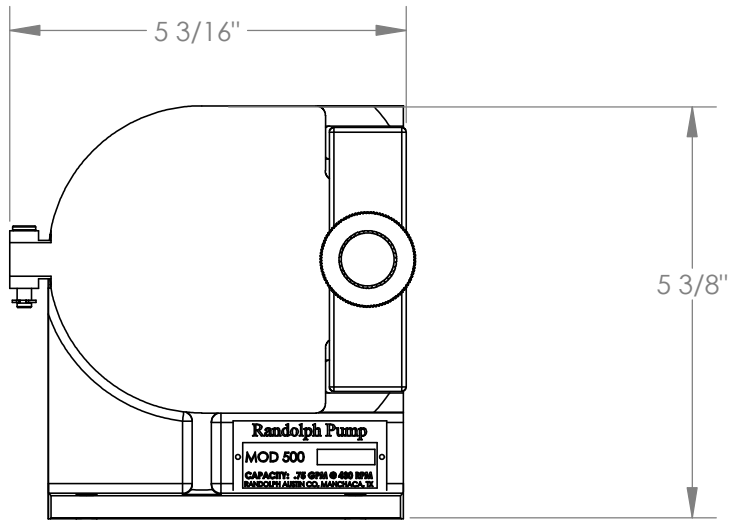
4

3

2

1

REVISIONS		DATE	APPROVED
ZONE	REV.	DESCRIPTION	



PROPRIETARY AND CONFIDENTIAL
 THE INFORMATION CONTAINED IN THIS DRAWING IS THE SOLE PROPERTY OF Randolph Austin Company. ANY REPRODUCTION IN PART OR AS A WHOLE WITHOUT THE WRITTEN PERMISSION OF Randolph Austin Company IS PROHIBITED.

DIMENSIONS ARE IN INCHES		NAME	DATE
TOLERANCES:		DRAWN	
FRACTIONAL ± 1/64		CHECKED	
ANGULAR: MACH ± 1		ENG APPR.	
TWO PLACE DECIMAL ± .01		MFG APPR.	
THREE PLACE DECIMAL ± .005		Q.A.	
MATERIAL --		COMMENTS:	
NEXT ASSY	USED ON	FINISH --	
APPLICATION		DO NOT SCALE DRAWING	

Randolph Austin Co

**500-PHO
 Mounting Dimensions**

SIZE	DWG. NO.	REV.
A	500-PHO-MD	
SCALE:1:2	WEIGHT:	SHEET 1 OF 1