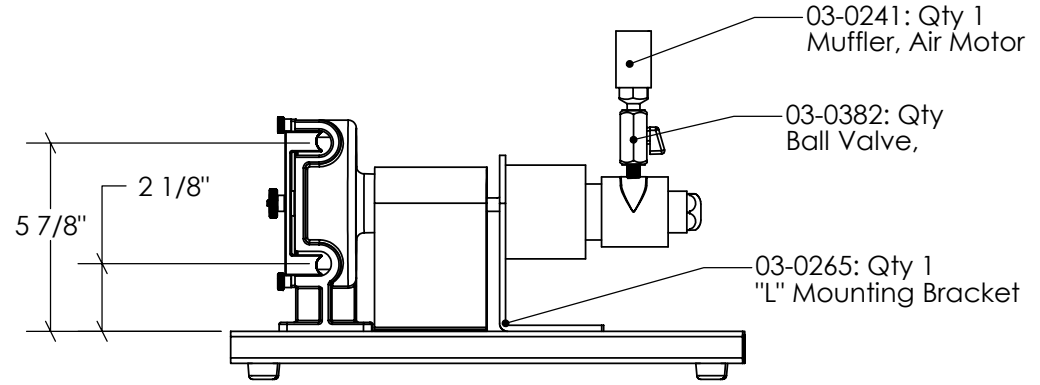
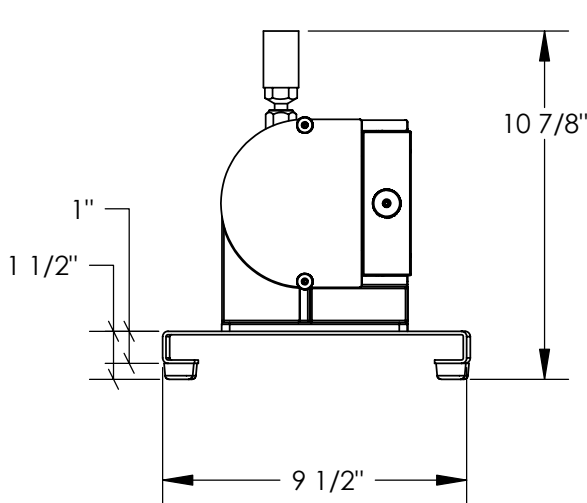
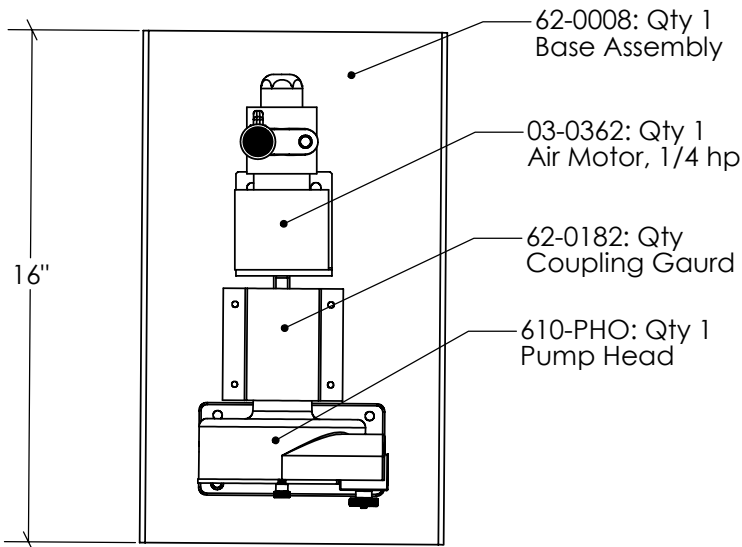


		REVISIONS		
ZONE	REV.	DESCRIPTION	DATE	APPROVED
	A	Coupling Guard is 62-0182 was 62-0183	16-Nov-2005	



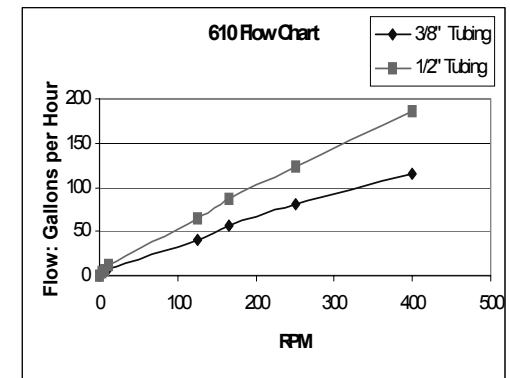
Items Not Shown:

- 00-0332: Qty 1- Pump Coupling, 5/8" bore
- 00-0322: Qty 1- Motor Coupling, 1/2" bore
- 00-0380: Qty 1 - "Spyder" Rubber Bushing



Motor Data

15:1 Reduction, 10-95 lbs in @ 40 rpm
 (minimum speed reduction)
 21 CFM @ 60 psi and 400 rpm
 Dry air with Lubricator within 18" of Motor recommended



PROPRIETARY AND CONFIDENTIAL
 THE INFORMATION CONTAINED IN THIS DRAWING IS THE SOLE PROPERTY OF Randolph Austin Company. ANY REPRODUCTION IN PART OR AS A WHOLE WITHOUT THE WRITTEN PERMISSION OF Randolph Austin Company IS PROHIBITED.

		DIMENSIONS ARE IN INCHES TOLERANCES: FRACTIONAL ± 1/64 ANGULAR: MACH ± 1 TWO PLACE DECIMAL ± .01 THREE PLACE DECIMAL ± .005	NAME	DATE
		MATERIAL		
		FINISH		
NEXT ASSY	USED ON		COMMENTS:	
APPLICATION		DO NOT SCALE DRAWING		

Randolph Austin Co

610-450: air motor pump, Layout drawing

SIZE	DWG. NO.	REV.
A	610-450	A
SCALE:1:1	WEIGHT:	SHEET 1 OF 1